

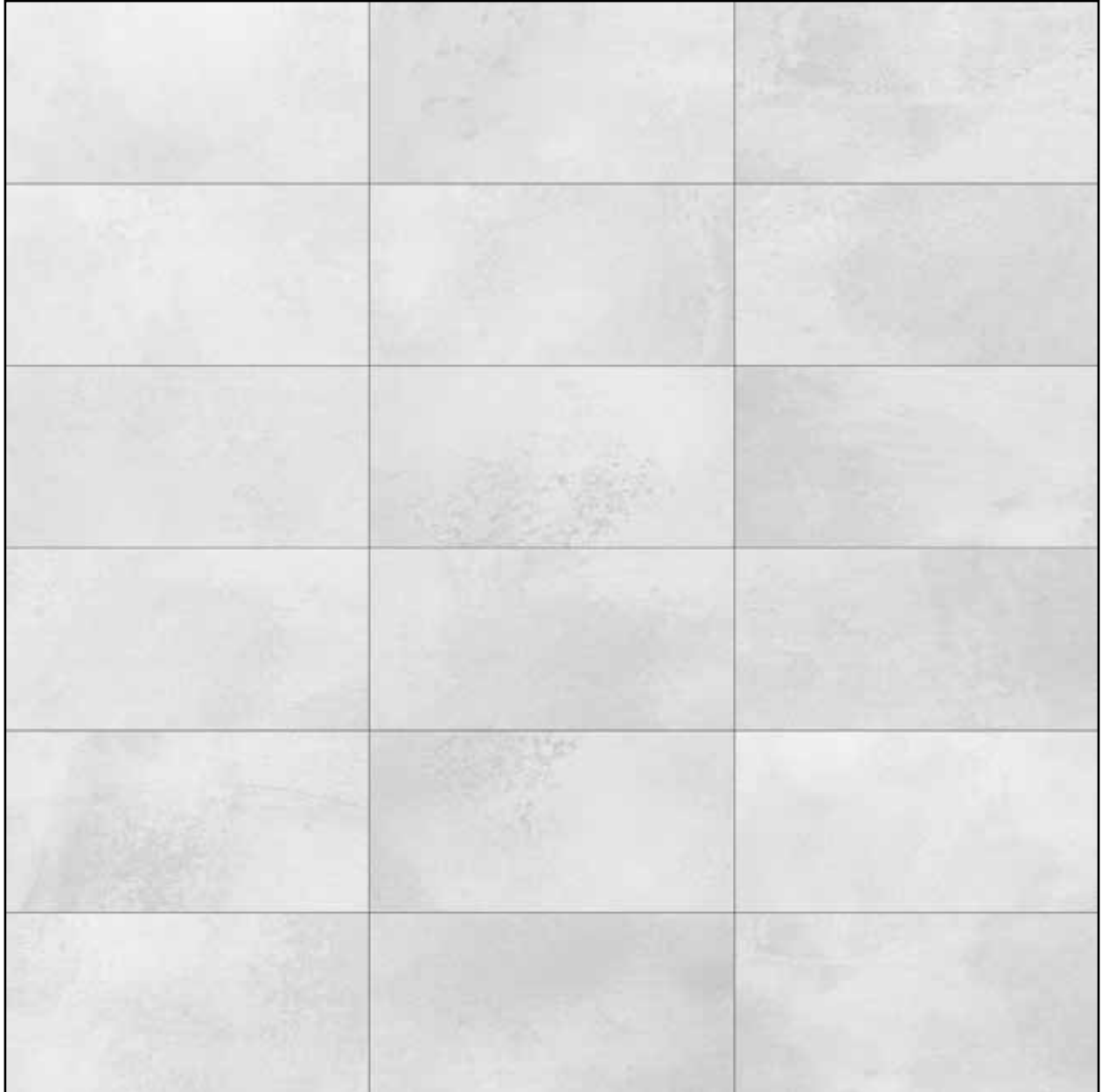
TILE + STONE
SOURCE

CEMENTO MAX
HD PORCELAIN TILE



18x36 CEMENTO MAX SAND HD PORCELAIN TILE

CEMENTO MAX SAND
SPECIAL GLAZE
HD PORCELAIN TILE



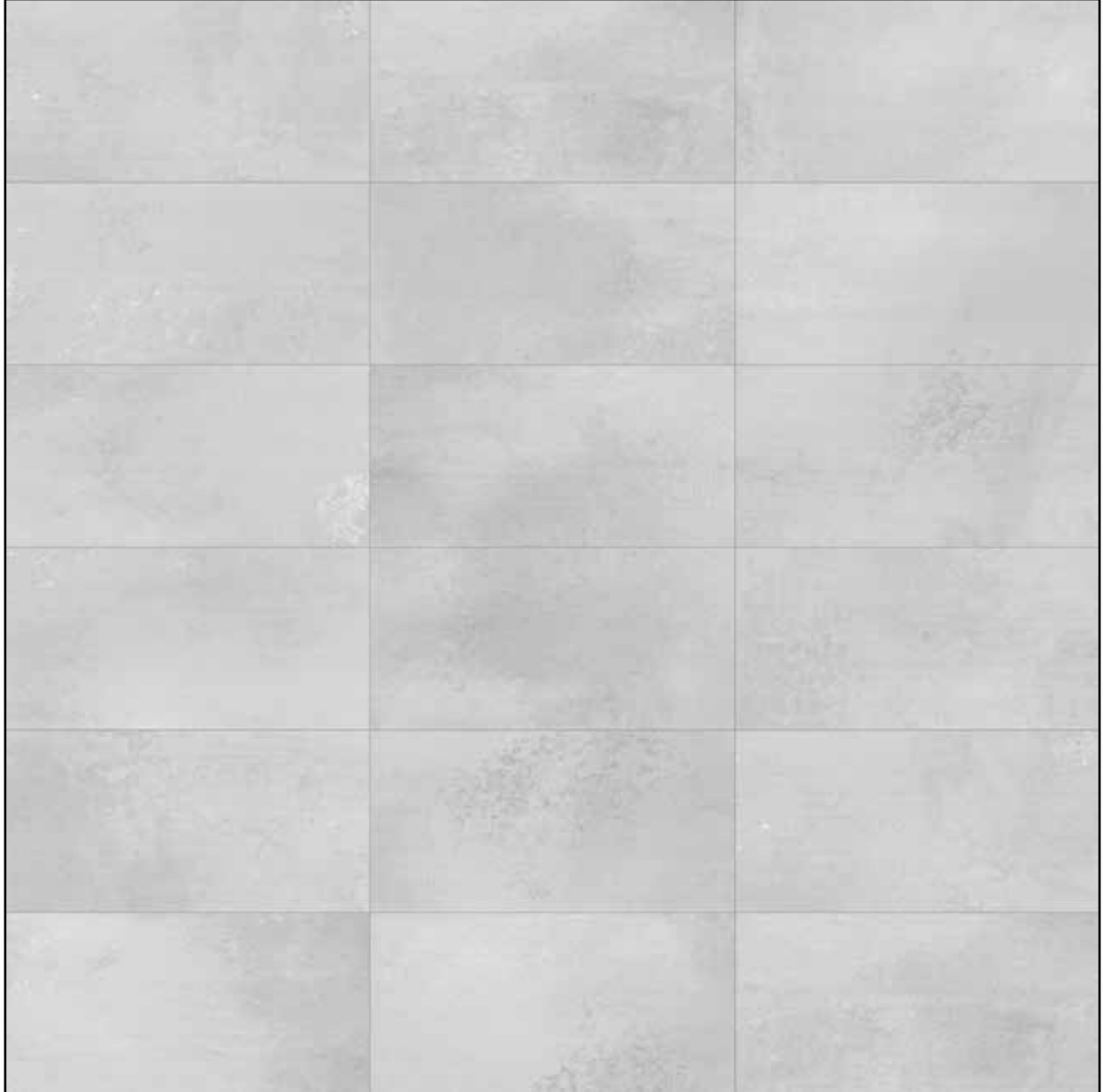
18x36 CEMENTO MAX SAND
HD PORCELAIN TILE

CEMENTO MAX SAND
SPECIAL GLAZE
HD PORCELAIN TILE



18x36 CEMENTO MAX SAND
HD PORCELAIN TILE
333-101

CEMENTO MAX LIGHT GREY
SPECIAL GLAZE
HD PORCELAIN TILE



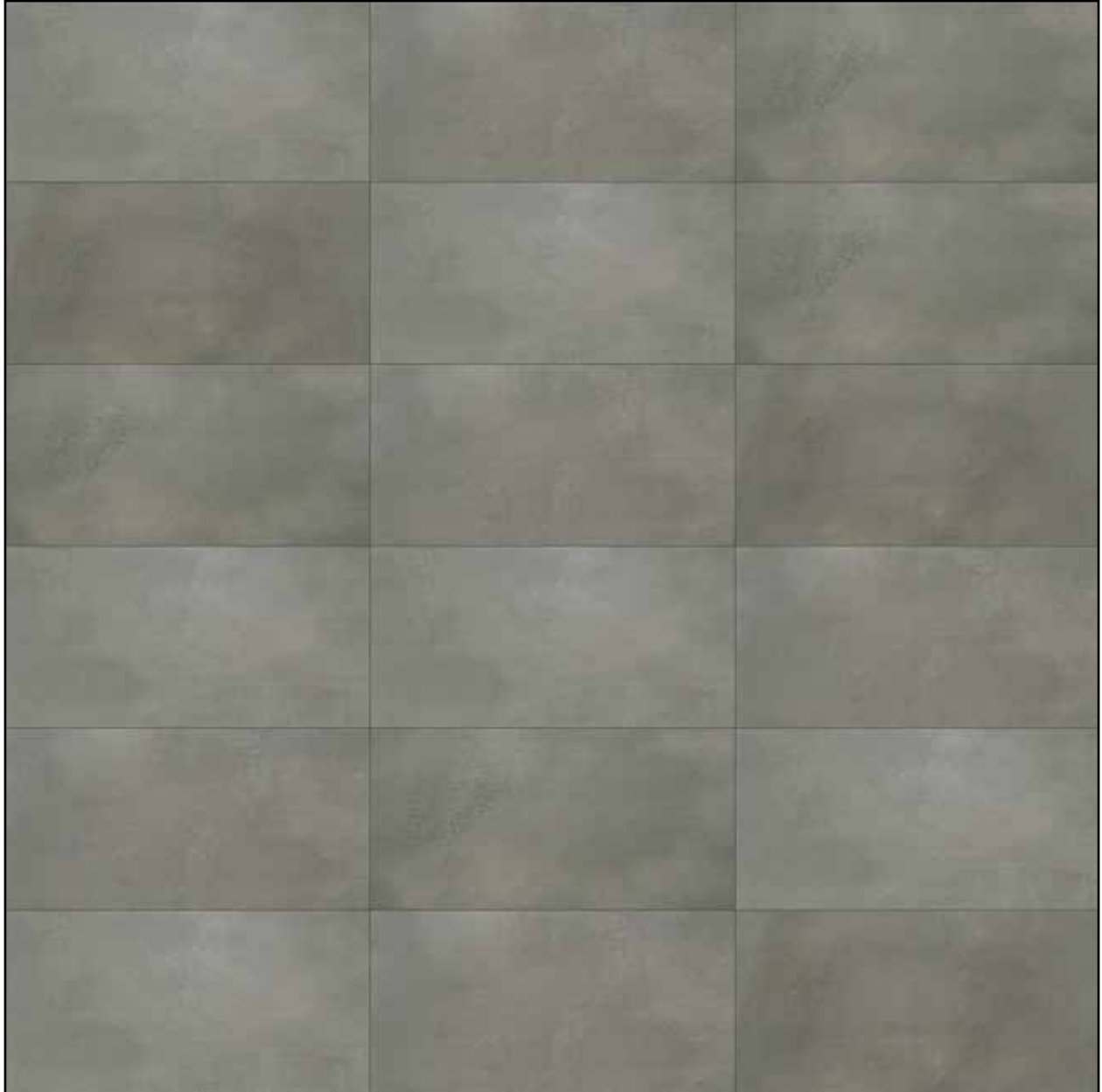
18x36 CEMENTO MAX LIGHT GREY
HD PORCELAIN TILE

CEMENTO MAX LIGHT GREY
SPECIAL GLAZE
HD PORCELAIN TILE



18x36 CEMENTO MAX LIGHT GREY
HD PORCELAIN TILE
333-102

CEMENTO MAX DARK GREY
SPECIAL GLAZE
HD PORCELAIN TILE



18x36 CEMENTO MAX DARK GREY
HD PORCELAIN TILE

CEMENTO MAX DARK GREY
SPECIAL GLAZE
HD PORCELAIN TILE



18x36 CEMENTO MAX DARK GREY
HD PORCELAIN TILE
333-103

Packaging Information

DESCRIPTION	ITEM CODE	LBS/ BOX	PCS/ BOX	SQFT/ BOX	PCS/ SKID	SQFT/ SKID
18"x36" CEMENTO MAX SAND	333-101	64.2	3	13.5	87	391.5
18"x36" CEMENTO MAX LIGHT GREY	333-102	64.2	3	13.5	87	391.5
18"x36" CEMENTO MAX DARK GREY	333-103	64.2	3	13.5	87	391.5

General Specifications

DESCRIPTION	METHOD	UNIT	18"x36"
ACTUAL SIZE	ISO 10545-2	mm in	450 x 900 mm 17.7 x 35.4 in
THICKNESS	ISO 10545-2	mm - in	9.8 mm - 0.39 in
WATER ABSORPTION	ISO 10545-3	(%)	≤ 0.1
ABRASION RESISTANCE	ISO 10545-4	(PEI)	Class 3
SCRATCH HARDNESS	EN 15771	(Mohs)	5
BREAKING STRENGTH	ISO 10545-4	(N)	≥ 1300
CHEMICAL RESISTANCE	ISO 10545-13	(GL)	Class GLA
FROST RESISTANCE	ISO 10545-12		Fully Resistant
STATIC COF (WET)		(μ)	≥ 0.60
STATIC COF (DRY)		(μ)	≥ 0.70
SHADE VARIATION			V2





**TILE + STONE
SOURCE**

Know Your Tile

Tile + Stone Source
 #105, 6204 6A St SE
 Calgary, AB T2H 2B7
 403.252.8868

15304 111 Ave NW
 Edmonton, AB T5M 4C8
 780.756.8453

www.tilestonesource.com