



JEFFREY COURT



CHAPTER TWELVE

ASHLAND & HALSTED™

A COLLECTION BY JEFFREY COURT

THE
INSPIRATION

“CREATIVITY IS PIERCING THE
MUNDANE TO FIND THE MARVELOUS.

- BILL MOYERS

Chapter 12 Ashland & Halsted® is an absolute work of passion. For years we have been brainstorming on what “Industrial Chic” means and how it can be translated into tile. Drawing on inspiration from the heyday of American industry, we focused on what we felt were elements that best represented that era: strength, craftsmanship, and pride. It soon became apparent that the acclaimed Central Manufacturing District of Chicago was the culmination of this piece of Americana.

The name Ashland and Halsted are two streets running parallel to each other that tape off the 35th Street and Pershing Road corridor, that industry titans from the early 1900’s once called home.



Galvanized Elevation Brick

11 7/8" x 9 7/8" (12105)

Please Note:

All product shots are artistic interpretations of actual product. Due to the nature of the printing process, we recommend obtaining physical samples of product for actual color representation.

Chapter 12 Ashland & Halsted was designed to have shade variation reflective of antiqued materials. As such, these products should be treated as a combination of natural stone & handcrafted ceramic with a shade variation value of 3 or greater. We strongly recommend laying out and blending the tiles from multiple cartons prior to installation. This step will ensure a proper color blend in order to achieve a classic look.

Jeffrey Court highly recommends sealing all “Cast Iron” mosaics, field tiles, and liners with a high quality sealer prior to grouting to ensure an easy cleaning and as part of a maintenance regimen. Consult your sealer manufacturer for reapplication recommendations as part of an ongoing maintenance routine.



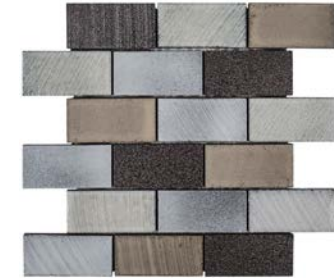
Reclaimed Elongated Hex

12 1/8" x 10 5/8" (12203)

LAVA STONE
RECLAIMED



Elevation Brick
11 7/8" x 9 7/8"
12205



2"x4" Brick
12" x 12"
12204



Elevation Brick
11 7/8" x 9 7/8"
12203



Mini Brick
11 3/8" x 11 5/8"
12206



Field
3" x 6"
12207



Liner
3/4" x 6"
12208

L A V A S T O N E
G A L V A N I Z E D



Elongated Hex
12 1/8" x 10 5/8"
12103



2" x 4" Brick
12" x 12 3/8"
12104



Elevation Brick
11 7/8" x 9 7/8"
12105



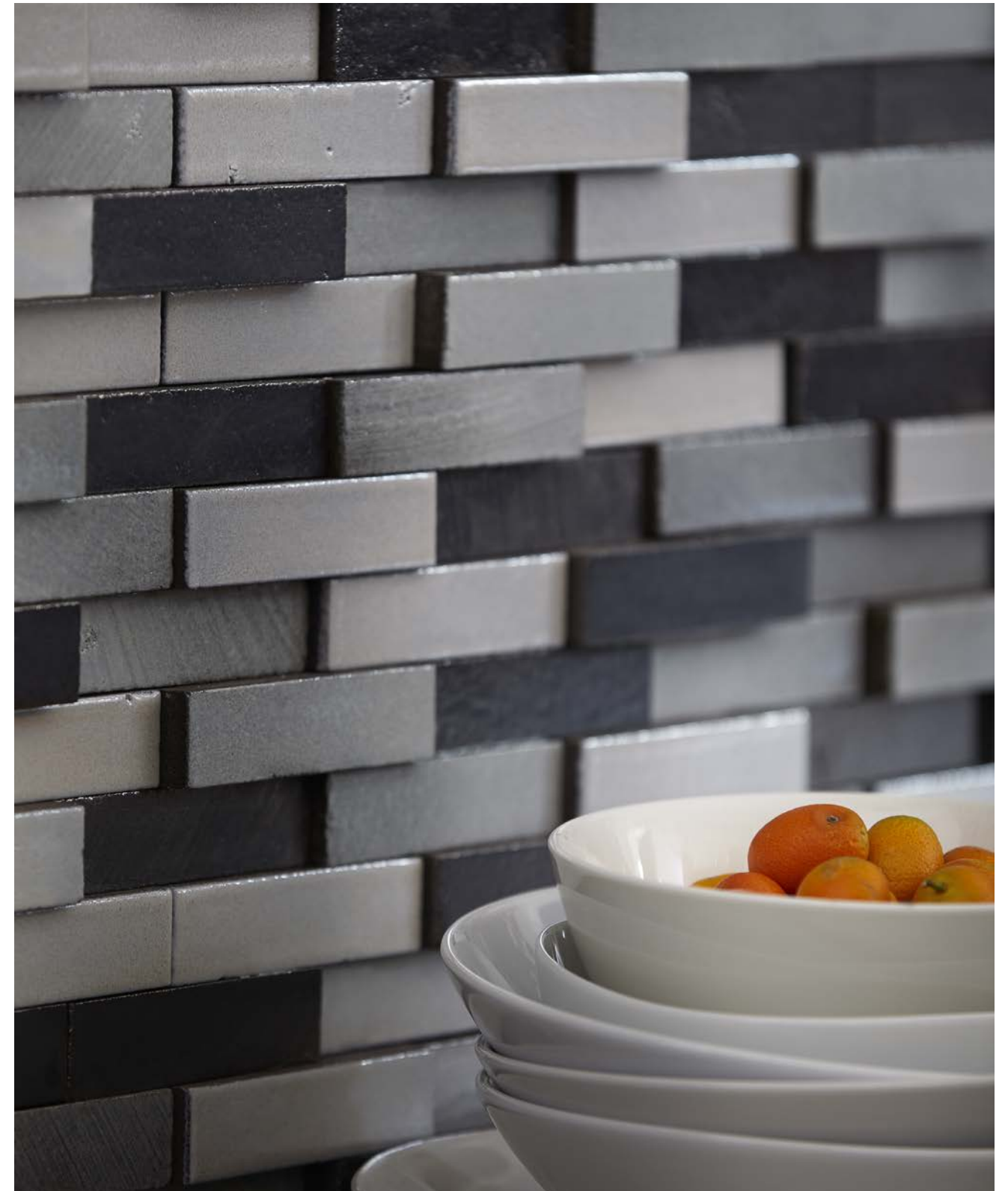
Mini Brick
11 3/8" x 11 5/8"
12106



Field
3" x 6"
12107



Liner
3/4" x 6"
12108



Galvanized Elevation Brick

11 7/8" x 9 7/8" (12105)



Cast Iron Mini Brick

$11 \frac{3}{8}'' \times 11 \frac{5}{8}''$ (12306)

LAVA STONE
CAST IRON



Elongated Hex
 $12 \frac{1}{8}'' \times 10 \frac{5}{8}''$
12303



2'' x 4'' Brick
 $12'' \times 12 \frac{3}{8}''$
12304



Elevation Brick
 $11 \frac{7}{8}'' \times 9 \frac{7}{8}''$
12305



Mini Brick
 $11 \frac{3}{8}'' \times 11 \frac{5}{8}''$
12306

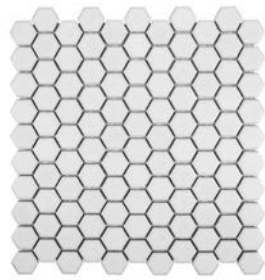


Field
 $3'' \times 6''$
12307

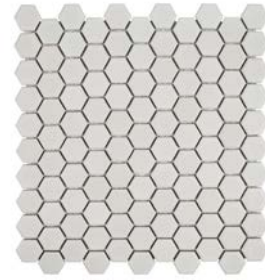


Liner
 $3/4'' \times 6''$
12308

1" H E X A G O N



Ivory
11 1/4" x 11 1/4"
12604



Classic
11 1/4" x 11 1/4"
12605



Distressed
11 1/4" x 11 1/4"
12606



Welded
11 1/4" x 11 1/4"
12607



Ivory 1" Hexagon

11 1/4" x 11 1/4" (12304)

Distressed 1" Hexagon

11 1/4" x 11 1/4" (12306)

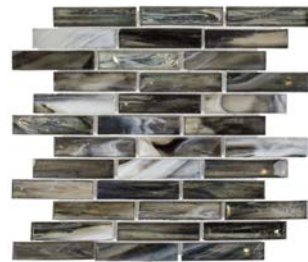
H O U R G L A S S
M O S A I C S



Dawn
11 5/8" x 12"
12601



Dusk
11 5/8" x 12"
12602



Midnight
11 5/8" x 12"
12603



Dusk Hour Glass Mosaic

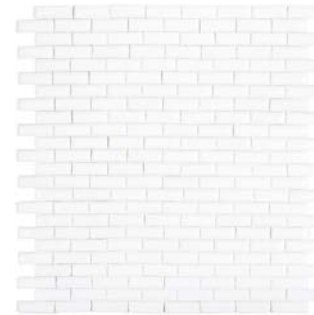
11 5/8" x 12" (12602)



Nitrogen Industrie Glass

10 ⁷/₈" x 12 ¹/₄" (12703)

INDUSTRIE GLASS
MOSAICS



Carbon
10 ⁷/₈" x 12 ¹/₄"
12701



Oxygen
10 ⁷/₈" x 12 ¹/₄"
12702



Nitrogen
10 ⁷/₈" x 12 ¹/₄"
12703



Cadmium
10 ⁷/₈" x 12 ¹/₄"
12704



Cadmium Industrie Glass 10 7/8" x 12 1/4" (12704)

Titanium District Brick 2 1/4" x 7 3/4" (12806)

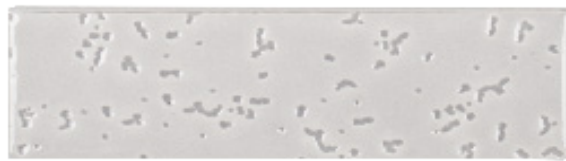
DISTRICT BRICK + LINER



Plaster - 2 1/4'' x 7 3/4'' 12801



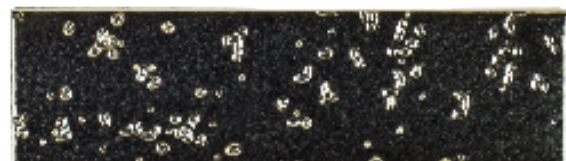
Canvas - 2 1/4'' x 7 3/4'' 12802



Concrete - 2 1/4'' x 7 3/4'' 12803



Copper - 2 1/4'' x 7 3/4'' 12804



Titanium - 2 1/4'' x 7 3/4'' 12806



Plaster - 1/2'' x 7 3/4'' 12901



Canvas - 1/2'' x 7 3/4'' 12902



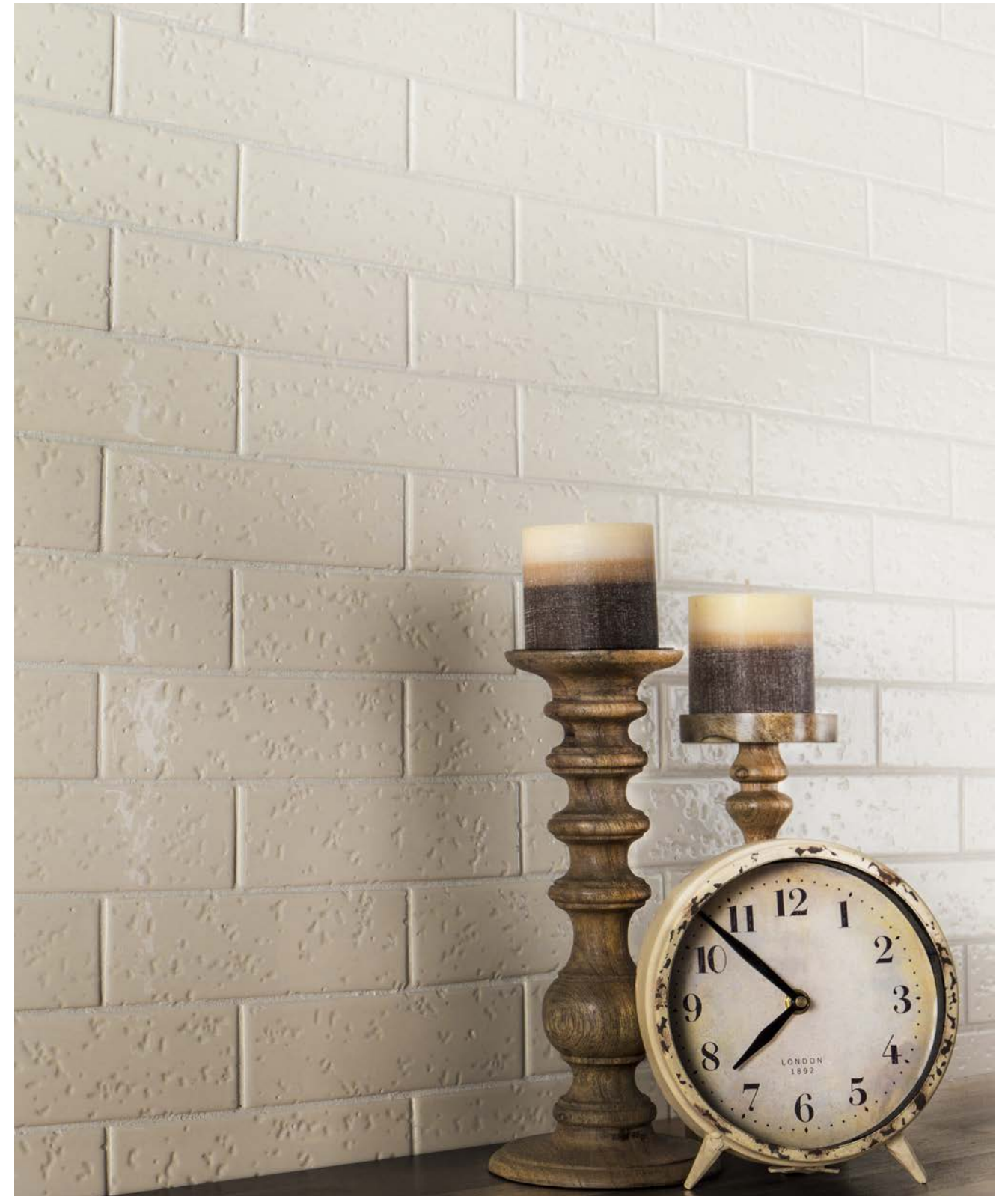
Concrete - 1/2'' x 7 3/4'' 12903



Copper - 1/2'' x 7 3/4'' 12904



Titanium - 1/2'' x 7 3/4'' 12906



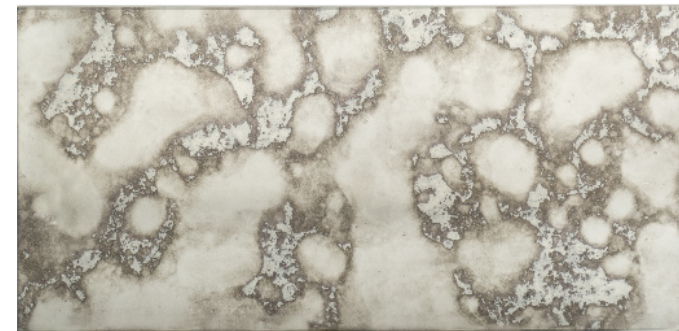
Canvas District Brick

2 1/4'' x 7 3/4'' (12802)



Yesterday's Glass
—
8" x 16" (12908)

Y E S T E R D A Y ' S G L A S S



Field - 8" x 16" 12908



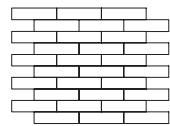
Field - 3" x 6" 12907

PRODUCT DETAILS

| MOSAICS | Galvanized | Reclaimed | Cast Iron | Ivory | Classic | Distressed | Welded | Dawn | Dusk | Midnight | Carbon | Oxygen | Nitrogen | Cadmium |
|-------------------------------------|------------|-----------|-----------|-------|---------|------------|--------|-------|------|----------|--------|--------|----------|---------|
| Elongated Hex - 12 1/8" x 10 9/16" | 12103 | 12203 | 12303 | | | | | | | | | | | |
| 2" x 4" Brick - 12" x 12 2/8" | 12104 | 12204 | 12304 | | | | | | | | | | | |
| Elevation Brick - 11 7/8" x 9 7/8" | 12105 | 12205 | 12305 | | | | | | | | | | | |
| Mini Brick - 11 3/8" x 11 5/8" | 12106 | 12206 | 12306 | 12604 | | | | | | | | | | |
| 1" Hexagon - 11 1/4" x 11 1/4" | | | | 12605 | | | | | | | | | | |
| Hour Glass - 11 3/8" x 12" | | | | 12606 | | | | | | | | | | |
| Industrie Glass - 10 7/8" x 12 1/4" | | | | 12607 | | | | | | | | | | |
| | | | | | | | | 12601 | | | | | | |
| | | | | | | | | 12602 | | | | | | |
| | | | | | | | | 12603 | | | | | | |
| | | | | | | | | | | | 12701 | | | |
| | | | | | | | | | | | 12702 | | | |
| | | | | | | | | | | | 12703 | | | |
| | | | | | | | | | | | 12704 | | | |

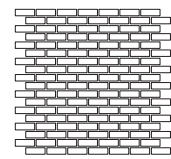
| FIELD TILES+ LINERS | Galvanized | Reclaimed | Cast Iron | Plaster | Canvas | Concrete | Copper | Titanium | Yesterday's Glass |
|------------------------------------|------------|-----------|-----------|---------|--------|----------|--------|----------|-------------------|
| District Brick - 2 1/4" x 7 3/4" | | | | 12801 | 12802 | 12803 | | | |
| District Brick - 2 1/4" x 7 3/4" | | | | | | | 12804 | | |
| Liner - 3/4" x 6" | 12108 | 12208 | 12308 | | | | | | |
| District Liner - 1/2" x 7 3/4" | | | | 12901 | 12902 | 12903 | | | |
| District Liner - 1/2" x 7 3/4" | | | | | | | 12904 | 12906 | |
| Field - 3" x 6" | 12107 | 12207 | 12307 | | | | | | |
| Yesterday's Glass Field - 8" x 16" | | | | | | | | | 12908 |
| Yesterday's Glass Field - 3" x 6" | | | | | | | | | 12907 |

Elevation Brick Mosaic
9.875" x 11.875" / Ea.



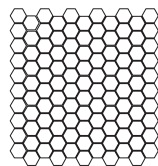
- 12105 Galvanized
- 12205 Reclaimed
- 12305 Cast Iron

Mini Brick Mosaic
11.375" x 11.625" / Ea.



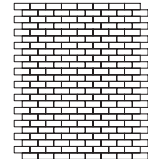
- 12106 Galvanized
- 12206 Reclaimed
- 12306 Cast Iron

1" Hexagon Mosaic
11.25" x 11.25" / Ea.



- 12604 Ivory
- 12605 Classic
- 12606 Distressed
- 12607 Welded

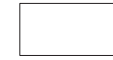
Industrie Glass Mosaic
10.875" x 12.25" / Ea.



- 12701 Carbon
- 12702 Oxygen
- 12703 Nitrogen
- 12704 Cadmium

PRODUCT DETAILS

Field Tile
3" x 6" / Sq. Ft.



- 12107 Galvanized
- 12207 Reclaimed
- 12307 Cast Iron

District Brick
2.25" x 7.75" / Sq. Ft.



- 12801 Plaster
- 12802 Canvas
- 12803 Concrete
- 12804 Copper
- 12806 Titanium

Field Tile
3" x 6" / Sq. Ft.



- 12907 Yesterday's Glass

Liner
0.75" x 6" / Ea.



- 12108 Galvanized
- 12208 Reclaimed
- 12308 Cast Iron

District Liner
0.50" x 7.75" / Ea.



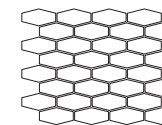
- 12901 Plaster
- 12902 Canvas
- 12903 Concrete
- 12904 Copper
- 12906 Titanium

Field Tile
8" x 16" / Sq. Ft.



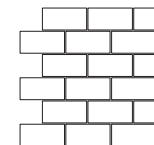
- 12908 Yesterday's Glass

Elongated Hex Mosaic
10.625" x 12.125" / Ea.



- 12103 Galvanized
- 12203 Reclaimed
- 12303 Cast Iron

2" x 4" Brick Mosaic
12" x 12.375" / Ea.



- 12104 Galvanized
- 12204 Reclaimed
- 12304 Cast Iron



CHAPTER TWELVE

ASHLAND & HALSTED™

A COLLECTION BY JEFFREY COURT

Cover Image
Reclaimed Elongated Hex
12 1/8" x 10 5/8" (12203)

Back Image
Reclaimed Elongated Hex
12 1/8" x 10 5/8" (12203)

C-CH12-2015

620 Parkridge Avenue
Norco, California 92860
P | 951.340.3383
www.JeffreyCourt.com

 | JEFFREY COURT®